

SPONGE-JET-GERÄTE



Rasp Xtreme

Qualitativ hochwertige Strahltechnik mit höherer Effektivität, Leistung und Mobilität für schwer zugängliche oder enge Bereiche.

Xtreme Leistung zum Schutz Ihrer Anlagen vor Korrosion durch minderwertige Untergrundvorbereitung in engen Bereichen - bzw. Bereichen, in denen Strahlmethoden bisher nicht zulässig waren. Dieses neue System unterscheidet sich von herkömmlichen Druckbehältern und Sponge-Jet Feed Units™ (Einspeisungsmodulen):

LEICHT und KOMPAKT:

- Passt leicht durch Mannlöcher mit 61 cm Durchmesser
- Wiegt weniger als 59 kg

HOHE LEISTUNG:

- Strahldrücke bis 8 bar mit Düsen bis zu Größe 10
- Pneumatisches, schneckenbasiertes System zur präzisen Kontrolle der Konzentration des Strahlmittels bei niedrigen Drücken
- Bis zu 37 l Kapazität für Sponge Media™ Strahlmittel
- 1 ¼-Zoll-Rohrleitung mit 2-Zoll-Regler gewährleistet uneingeschränkten, ausreichenden Luftstrom

EINFACHE HANDHABUNG und BEDIENUNG:

- Integrierte Hubösen und Transportrahmen erhöhen die Mobilität
- An der Oberseite angeordnete Bedienelemente und Anzeigen zur Regelung des Materialeinspeisungs- und Strahldrucks

Betriebsdruck: Gleichmäßiger Sponge Media Fluss mit Düsendrücken von 0,1 bar bis 8 bar.

Mindestdruck: Mindestens 2



bar für den Antrieb des Schneckensystems

Verwendbare Strahlmittel:

Silbernes Sponge Media™, rotes Sponge Media™, weißes Sponge Media™, grünes Sponge Media™ und blaues Sponge Media™ Strahlmittel

Höhe: 119 cm / Breite: 59 cm

Länge: 48 cm / Gewicht: 58 kg



Strahlcenter Erin GmbH Katalog 2015

Name	Art. Nummer	Preis	Ab 1 Stk.	Ab 5 Stk.
------	-------------	-------	-----------	-----------

170-SJ Feed Unit™

This unit Feed Unit is feature-rich and the most popular with an excellent balance between size, cost and blast-time.

Features specific to the 170-SJ are:

- Pressure relief valve
- High-capacity muffler
- Blast pressure adjustment
- Lifting eyes
- Fork pockets
- High-performance casters
- Secondary moisture separator
- Options: Nozzle size and nozzle type



Product Name: 170-SJ Feed Unit™

Part #: SJE-FE-170-SJ
 Weight: 410 kg (900.00 lb)
 Length: 110 cm (43 in)
 Width: 75 cm (29.5 in)
 Height: 154 cm (60.5 in)
 Volume: 170 liters (6 ft³)
 Pressure Certification: 10 bar (150 psi)
 Blast Time: 55 minutes

Blast hose 5 m (16ft) I.D. 32 mm (1-1/4 in)
 Nozzle Size: 9 mm – 18 mm (#6 - #12)
 Nozzle Holder : 50 mm or 1 1/4 in NPS
 Nozzle Type: SABER or WEV
 Deadman Handle with twinline
 Air Supply coupling: 50 mm BOSS, 2" 4 lug, or Surelock

*Weight is without shipping pallet, hoses and accessories.
 ** Blast Time is estimated based on using a working mix with a #6 nozzle. Actual times may vary.

Features:

Internal agitation assembly keeps Sponge Media abrasives flowing reliably throughout the vessel

Adjustable, pneumatic driven, auger metering system assures optimal media flow and maximum efficiency at all blast pressures

Integrated E-Stop and remote deadman control system

Standardized parts and maximum reliability by design

High-quality, industry-standard components for long, trouble-free operation, simplified spare part acquisition

Multi-language labels, instruction manuals and online training tools

Color-coded pneumatic lines for easy troubleshooting

Extended service,

permanently lubricated air motor and auger bearings minimize maintenance and wear



permanently lubricated air wear
motor and auger bearings
minimize maintenance and

Name	Art. Nummer	Preis	Ab 1 Stk.	Ab 5 Stk.
------	-------------	-------	-----------	-----------

470-SJ Feed Unit™

This Feed Unit is feature-rich and larger than our most popular Feed Unit with up to two and a half hours of uninterrupted blast time before refilling.

Features specific to the 470-SJ are:

- Utility step
- High-capacity muffler
- Blast pressure adjustment
- Lifting eyes
- Fork pockets
- High-performance casters
- Secondary moisture separator
- High-volume pressure relief valve
- Centralized controls for precision monitoring and adjustment
- Options: Nozzle size and nozzle type

Specifications:

Product Name: 470-SJ Feed Unit™

- Part #: SJE-FE-470-SJ
- Weight: 688 kg (1,515.00 lb)
- Length: 126 cm (49.5 in)
- Width: 98 cm (38.5 in)
- Height: 191 cm (75 in)
- Volume: 453 liters (16 ft³)
- Pressure Certification: 10 bar (150 psi)
- Blast Time: 140 minutes
- Blast hose 5 m (16') , I.D. 32 mm (1-1/4 in)
- Nozzle Size: 9 mm – 18 mm (#6 - #12)
- Nozzle Holder : 50 mm or 1 1/4 in NPS
- Nozzle Type: SABER or WEV
- Deadman Handle with twinline
- Air Supply coupling: 50 mm BOSS, 2-in 4 lug, or Surelock

*Weight is without shipping pallet, hoses and accessories.

** Blast Time is estimated based on using a working mix with a #6 nozzle. Actual times may vary.

Features:

- Internal agitation assembly keeps Sponge Media abrasives flowing reliably throughout the vessel
- Adjustable, pneumatic driven, auger metering system assures optimal media flow and maximum efficiency at all blast pressures
- Integrated E-Stop and remote deadman control system
- Standardized parts and maximum reliability by design
- High-quality, industry-standard components for long, trouble-free operation, simplified spare part acquisition and replacement
- Multi-language labels, instruction manuals and online



training tools

- Color-coded pneumatic lines for easy troubleshooting
- Extended service, permanently lubricated air motor and auger bearings minimize maintenance and wear



Strahlcenter Erin GmbH Katalog 2015

for easy troubleshooting
Extended service,
permanently lubricated air
motor and auger bearings

minimize maintenance and
wear

Name	Art. Nummer	Preis	Ab 1 Stk.	Ab 5 Stk.
------	-------------	-------	-----------	-----------

Kwiet Kave™

Spezielle Konstruktion zur
Geräuschdämpfung bei
Strahlverfahren

Geräuscharmer Betrieb
ermöglicht Strahlarbeiten in der
Nähe von Fertigungspersonal
ohne übermäßige
Lärmbelastung.

Gute Sicht für die
Sicherheitsüberwachung von
Arbeiten und
Qualitätsinspektionen.

Komplettsysteme kosten
weniger als ein typisches
lufttechnisches System für
einen herkömmlichen
Sandstrahlraum.

HEPA-Luftfilter ermöglichen die
Luftzirkulation im Gebäude und
senken somit die

Heiz-/Klimaanlagenkosten.

Keine Notwendigkeit, ein
neues Gebäude oder
Fundament zu errichten.

Keine erdverlegten
Förderanlagen oder
aufgeständerte Böden.

Montage auf ebenem Boden.

Bessere Sichtbarkeit im
Strahlraum erhöht die Qualität
der Untergrundvorbereitung.

Ausstattung des Grundsystems:

- Sponge-Jet 400-HP Feed
Unit™ (andere Optionen
verfügbar) und 50-E
Recycler™

- Staubabscheider hoher
Kapazität mit zweistufiger,
effizienter HEPA-Staubfilterung

ermöglicht die Luftzirkulation im
bestehenden Gebäude

- Integriertes elektrisches
Vakuumsystem ermöglicht
Rückgewinnung des
Strahlmittels und
automatisiertes Recycling der
Sponge Media™

- Geräuschdämpfender
Arbeitsbereich mit
Hauptarbeitstüren,
Personaltüren und Sichtfenster

- Strahlmittel-Absaugeinheiten
in den Ecken (in Verbindung
mit dem Vakuumsystem)

räumen den Boden
kontinuierlich auf und führen
das Sponge Media Strahlmittel
automatisch zurück

- Geschlossene Fässer
ermöglichen einfache, saubere
Entsorgung des Abfalls
(kundenspezifische Systeme
sind ebenfalls verfügbar)

Filter kann schnell und einfach

gereinigt und ausgetauscht
werden.

Bedienfeld vereinfacht die
Bedienung und visuelle
Anzeige.

Maße des Grundmodells:

3,7 m x 4,9 m x 2,5 m (12 ft x
16 ft x 8 ft)

andere Größen auf Anfrage



Name	Art. Nummer	Preis	Ab 1 Stk.	Ab 5 Stk.
------	-------------	-------	-----------	-----------

B-VAC™ Pro 4



Automatisches Rückgewinnungs-, Recycling- und Nachladesystem spart Arbeitskosten. Mithilfe der automatisierten Strahlmittel-Rückgewinnungssysteme von Sponge-Jet können Strahl- und Lackierarbeiten beschleunigt und somit Zeit, Arbeitskosten und Geld eingespart werden. Die B-VAC™ Systeme von Sponge-Jet nehmen das Sponge Media™ Strahlmittel im Arbeitsbereich auf und transportieren es automatisch zum Sponge-Jet Recycler™, wo die Klassierung stattfindet. Dabei werden Fremdkörper entfernt und die Sponge Media recycelt. Wiederverwendbares Strahlmittel wird dann zum Cyclone Storage Silo der Feed Unit™ transportiert, das die

Vorschubeinheit automatisch nachlädt, um ein kontinuierliches Strahlverfahren zu gewährleisten.

KONFIGURATION:
 470-SJ Feed Unit™:
 - 453 l (14 ft³) Druckbehälter
 - Kundenspezifisches Rührwerk mit bis zu 1.360 kg (3.000 lb) Kraft, 20.000 Umdrehungen pro Tag
 - Pneumatisches, schneckenbasiertes Strahlmittel-Vorschubsystem kontrolliert die Menge des Luftstroms zugeführten Strahlmittels
 - 50 mm (2 Zoll) Hochleistungs-, Rohrleitungs- und Ventilsystems
 - Integriertes pneumatisches Bedienfeld

- 15 m (50 ft) Strahlschlauch mit 31,75 mm (1,25 Zoll) Innendurchmesser
- 12 mm (0,5 Zoll) Venturidüse mit breitem Einlauf
- Pneumatische Totmannschalter (elektrische Ausführung optional)

50-P Sponge-Jet Recycler™:
 - Überdimensioniertes 50 cm (19,5 Zoll) Deck an Vibrations-Klassierer für Strahlmittel mit Abdichtung zur Gewährleistung der Vakuumdichtigkeit
 - Hochgestellter Sponge-Jet Recycler ermöglicht Schwerkraftabführung von Abfällen in standardmäßige Stahlfässer

Geräuscharmer Vakuumherzeuger mit hohem

kontrolliert die Menge des Luftstrom zugeführten Strahlmittels

- 50 mm (2 Zoll)

Hochleistungs-, Rohrleitungs- und Ventilsystems

- Integriertes pneumatisches Bedienfeld
- 15 m (50 ft) Strahlschlauch mit 31,75 mm (1,25 Zoll) Innendurchmesser
- 12 mm (0,5 Zoll) Venturidrüse mit breitem Einlauf
- Pneumatische Totmannschalter (elektrische Ausführung optional)

50-P Sponge-Jet Recycler™:

- Überdimensioniertes 50 cm (19,5 Zoll) Deck an Vibrations-Klassierer für Strahlmittel mit Abdichtung zur Gewährleistung der Vakuumdichtigkeit
- Hochgestellter Sponge-Jet Recycler ermöglicht Schwerkraftabführung von Abfällen in standardmäßige Stahlfässer

Geräuscharmer Vakuumerzeuger mit hohem Durchfluss:

- 630 Nm³/h (370 cfm)

Vakuumerzeuger

- 76,5 dB(a) Lärmschutzpaket
- Max. Saughub von 3800 mm Wassersäule (11 Zoll Hg)
- 4,1 Nm³/h (145 cfm)

Versorgungsluft bei 7 bar (100 psi) mit 8 kg (18 lb/min)

Transportfähigkeit an 100 m (300 ft) Schlauch

- Rückstromluft-Reinigungsfilter
- 15 m (50 ft) transparenter

Vakuumschlauch

Hochfester Stahlrahmen:

- Robuste Konstruktionen für Werften und Offshore-Anwendungen
- Kapazität zum Anheben der vollen Einheit
- Zusätzliche Einfahrtaschen für Varianten
- Integrierte Leiter- und Plattformeneinheit

Cyclone Storage Silos mit Inspektionsluken:

- Fliehkraftabscheider trennen das Sponge Media Strahlmittel vom Vakuumstrom
- Zwei überdimensionierte Puffersilos für den 50-P Recycler und die 400-HP Feed Unit

VERARBEITUNG:

(1) Vakuumerzeuger: Saugt Sponge Media Strahlmittel aus dem Vakuumkopf durch alle nicht unter Druck stehenden Komponenten.

(2) Wiedergewinnungs-Cyclone Storage Silo: Trennt das wiedergewonnene Sponge Media Strahlmittel vom Vakuumluftstrom und lagert es für die automatisierte Klassierung. Der größte Teil des Vakuumluftstroms wird am Sponge-Jet Recycler vorbeigeführt und unterstützt dann den pneumatischen Transport des wiederverwendbaren Sponge Media Strahlmittels zum Fliehkraftabscheider der Feed Unit.

(3) Sponge- Jet Recycler: Der Sponge-Jet Recycler reinigt und trennt wiederverwendbares Sponge Media Strahlmittel unter Vakuum mit minimalem Luftstrom vom Abfallmaterial.

(4) Feed Unit Cyclone Storage Silo: Dieser mit pneumatischem Antrieb ausgestattete Fliehkraftabscheider trennt die wiederverwendbare Sponge Media von Vakuumluftstrom und lagert das Strahlmittel dann für das automatische Nachladen in die Feed Unit. Ein speziell konfigurierter Totmannschalter beginnt mit der Betätigung des Antriebs und öffnet dann das Abblasventil, um die Feed Unit automatisch nachzuladen, wenn der Totmannschalter losgelassen wird.

(5) Feed Unit: Regel und fördert Sponge Media Strahlmittel durch die Strahldrüse für die Untergrundvorbereitung. Feed Units sind so konstruiert, dass sie die spezifischen Durchflussmerkmale der Sponge Media erfüllen, und ermöglichen die präzise Einstellung von Strahldruck und Strahlmittel-Vorschubrate.

Höhe: 331 cm (130 Zoll)
Breite: 155 cm (61 Zoll)
Länge: 246 cm (97 Zoll)

Name	Art. Nummer	Preis	Ab 1 Stk.	Ab 3 Stk.
------	-------------	-------	-----------	-----------

Robotica

Eine Roboticlösung die es erlaubt Rohre, Kesselwagen etc mit bis zu einem Durchmesser von ca. 5 m automatisiert zu strahlen. Zusätzlich wird ein Strahleinheit von Sponge-Jet benötigt. Wir empfehlen bei mittleren Projekten die SJ 470 und bei größeren Projekten das BVAC Pro 3 System. Bei Rückfragen stehen wir Ihnen gerne zur Verfügung.



Product Name: Robotica™
 Part #: SJE-RB1-PKG
 Weight: 136kg kg (300.00 lb)
 Length: 109 cm (43 in)
 Width: 57 cm (22.5 in)
 Height: 52 cm (20.5 in)
 Minimum Diameter
 (Standard): 106 cm (42 in)
 Maximum Diameter
 (Standard): 3.7 m (12 ft)
 Minimum Diameter
 (Custom): 56 cm (22 in)
 Maximum Diameter
 (Custom): 10 m (33 ft)
 Features:

Integrated to work with all

current model Sponge-Jet
 Feed Units (400HP or larger
 recommended)

Standardized parts and
 maximum reliability by design
 High-quality,
 industry-standard components
 assure for long, trouble-free
 operation and simplified spare
 part acquisition

Multi-language labels,
 instruction manuals and online
 training tools

Simple design for easy
 troubleshooting

Extended service,
 wear-resistant bearings for
 minimized maintenance and
 wear

Components protected
 inside a strong steel

exoskeleton for durability
 Heavy-duty cords and
 military-grade connections

Name	Art. Nummer	Preis	Ab 1 Stk.	Ab 5 Stk.
------	-------------	-------	-----------	-----------

170-CG Feed Unit™

Preiswerte Kontractormaschine geeignet für Firmen die immer die selben Strahl Tätigkeiten durchführen. Beispielsweise in Werften etc. Die Maschine hat nur eingeschränkte Einstellmöglichkeiten.



Name	Art. Nummer	Preis	Ab 1 Stk.	Ab 5 Stk.
------	-------------	-------	-----------	-----------

170-EX Feed Unit™

Hier möchten wir Ihnen die neue ATEX Strahleinheit 170-EX Feed Unit vorstellen.

Similar to the Sponge-Jet 170-SJ Feed Unit but with a stainless steel frame and other spark minimization features; designed for use in potentially flammable environments. ATEX Zone 2 certified.

Features specific to the 170-EX are:

- ATEX-Certified
- Specialty ATEX-approved components
- Additional grounding systems
- Utility step
- High-capacity muffler
- Blast pressure adjustment
- Lifting eyes
- Fork pockets
- High-performance casters
- Secondary moisture separator
- High-volume pressure relief valve
- Centralized controls for precise monitoring and adjustment
- Options: Nozzle size and

nozzle type



Name	Art. Nummer	Preis	Ab 1 Stk.	Ab 5 Stk.
------	-------------	-------	-----------	-----------

35-P Sponge-Jet Recycler™

35-P Sponge-Jet Recycler™



Reduzierung des Materialbedarfs um bis zu 95 % durch Recycling von Strahlmittel

Äußerst mobile, elektrische und pneumatische Sponge-Jet Recycler reduzieren den Strahlmittelverbrauch auf effektive Weise durch Trennung von wiederverwendbarem Sponge Media Strahlmittel von Staub, Schwebstoffen und/oder potenziell gefährlichem Abfall - die gewöhnlich als Staub in die Luft freigesetzt werden würden. Durch 6- bis 15-malige Wiederverwendung der Sponge Media können die Strahlmittelkosten sowie die Kosten für Transport, Bereitstellung, Reinigung und Entsorgung um bis zu 95 % gesenkt werden.

35-P Sponge-Jet Recycler™ - Ein zuverlässiges, effizientes Arbeitstier für jegliche Projekte

Höhe: 122 cm (48 Zoll)
Breite: 84 cm (33 Zoll)
Länge: 84 cm (33 Zoll)
Gewicht: 136 kg (300 lb)

Anforderungen:
Kompressor mit min. 2.832 l/min (100 CFM) bei 2 bar (30 PSI) und min. 1,27 cm (0,5 Zoll) Innendurchmesser, 2 Befestigungsschrauben, Chicago Anschluss

Optional Hubrahmen für Sponge-Jet Recycler™:
Pulverbeschichteter Schweißstahlrahmen für einfache Montage an Recycler der Serie 35.

Höhe: 122 cm (48 Zoll)
Breite: 84 cm (33 Zoll)
Länge: 84 cm (33 Zoll)
Gewicht: 42 kg (92 lb)



Sponge-Jet Recycler™:
Pulverbeschichteter
Schweißstahlrahmen für
einfache Montage an Recycler

der Serie 35.
Höhe: 122 cm (48 Zoll)
Breite: 84 cm (33 Zoll)
Länge: 84 cm (33 Zoll)

Gewicht: 42 kg (92 lb)

Name	Art. Nummer	Preis	Ab 1 Stk.	Ab 5 Stk.
------	-------------	-------	-----------	-----------

35-E Sponge-Jet Recycler™

Reduzierung des Materialbedarfs um bis zu 95 % durch Recycling von Strahlmittel
 Äußerst mobile, elektrische und pneumatische Sponge-Jet Recycler reduzieren den Strahlmittelverbrauch auf effektive Weise durch Trennung von wiederverwendbarem Sponge Media Strahlmittel von Staub, Schwebstoffen und/oder potenziell gefährlichem Abfall - die gewöhnlich als Staub in die Luft freigesetzt werden würden. Durch 6- bis 15-malige Wiederverwendung der Sponge Media können die Strahlmittelkosten sowie die Kosten für Transport, Bereitstellung, Reinigung und Entsorgung um bis zu 95 % gesenkt werden.

35-E Sponge-Jet Recycler™ - Zuverlässig und effizient - mit derselben Kapazität wie der Sponge-Jet 35-P Recycler, jedoch mit ELEKTRISCHEM Antrieb.

Höhe: 137 cm (54 Zoll)
 Breite: 74 cm (29 Zoll)
 Länge: 61 cm (24 Zoll)
 Gewicht: 148 kg (325 lb)

Optionaler Hubrahmen für Sponge-Jet Recycler™:
 Pulverbeschichteter Schweißstahlrahmen für einfache Montage an Recycler der Serie 35.
 Höhe: 122 cm (48 Zoll)



Breite: 84 cm (33 Zoll)
 Länge: 84 cm (33 Zoll)
 Gewicht: 42 kg (92 lb)

Name	Art. Nummer	Preis	Ab 1 Stk.	Ab 5 Stk.
------	-------------	-------	-----------	-----------

Continuous VAC-Recovery System™ CVR-P110

Automatic Vacuum/Recovery reduces Handling and Labor Costs

This continuous recycling and reloading system can save on labor, time and money.

Recover Sponge Media™ abrasive in the work area, automatically transport it to the Sponge-Jet Recycler™.

Powerful Pneumatic Vacuum:
For recovery up to 100m (300ft) or 30m (100ft) vertically;
3800mm WC (11 in Hg) maximum suction.

First Stage Recovery Cyclone Hopper:

Recovers, separates and stores, dust, waste and Sponge Media which has been vacuumed.

Second Stage Recovery:
Cycles from vacuum to ambient allowing material to pass intermittently from first to stage to the Recycler without interruption to the vacuum.

Quick-Assembly Frame:

Three-part frame system joins together with peg and locking pins, making assembly and disassembly fast and easy.

Timer-Controlled Valve:

Adjustable timer automatically controls vacuum cycles between hopper stages.

Includes: one pneumatic vacuum, one 2-stage continuous pneumatically timed collection and discharge silo system, 15m (50ft) of vacuum hose, adjustable stand with fork lift pockets.





vacuum, one 2-stage
continuous pneumatically timed
collection and discharge silo

system, 15m (50ft) of vacuum
hose, adjustable stand with
fork lift pockets.

Name	Art. Nummer	Preis	Ab 1 Stk.	Ab 5 Stk.
------	-------------	-------	-----------	-----------

Continuous VAC.Recovery System™ CVR-P220

Automatic Vacuum/Recovery reduces Handling and Labor Costs

This continuous recycling and reloading system can save on labor, time and money.

Recover Sponge Media™ abrasive in the work area, automatically transport it to the Sponge-Jet Recycler™.

Powerful Pneumatic Vacuum:
For recovery up to 100m (300ft) or 30m (100ft) vertically;
3800mm WC (11 in Hg) maximum suction.

First Stage Recovery Cyclone Hopper:

Recovers, separates and stores, dust, waste and Sponge Media which has been vacuumed.

Second Stage Recovery:
Cycles from vacuum to ambient allowing material to pass intermittently from first to stage to the Recycler without interruption to the vacuum.

Quick-Assembly Frame:
Three-part frame system joins together with peg and locking pins, making assembly and disassembly fast and easy.

Timer-Controlled Valve:
Adjustable timer automatically controls vacuum cycles between hopper stages.

Includes: one pneumatic vacuum, one 2-stage continuous pneumatically timed collection and discharge silo system, 15m (50ft) of vacuum hose, adjustable stand with fork lift pockets.





vacuum, one 2-stage
continuous pneumatically timed
collection and discharge silo

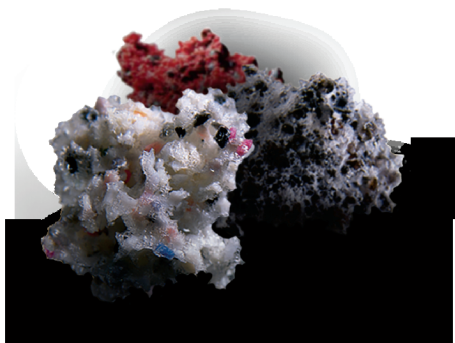
system, 15m (50ft) of vacuum
hose, adjustable stand with
fork lift pockets.

Name	Art. Nummer	Preis	Ab 1 Stk.	Ab 5 Stk.
------	-------------	-------	-----------	-----------



Name	Art. Nummer	Preis	Ab 10 Stk.	Ab 100 Stk.
------	-------------	-------	------------	-------------

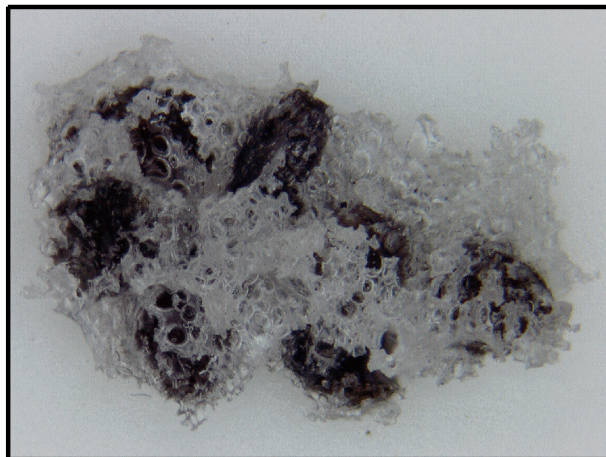
SPONGE-JET MEDIA



Silver 16

Silver Sponge Media™
Combines one of the world's
hardest and most effective
abrasives (aluminum oxide -
mohs hardness 9) with the
durability and recyclability of
Sponge Media and a range of
grit sizes to address virtually
every application.

Silver Sponge Media Type:
Silver 16 Sponge Media
Profile: ± 100 micron (± 4 mil)
(on mild carbon steel)
Abrasive Agent: 16-Grit
Aluminum Oxide



Name	Art. Nummer	Preis	Ab 1 Stk.	Ab 55 Stk.	Ab 330 Stk.
------	-------------	-------	-----------	------------	-------------

Silver 30

Silver Sponge Media™

Combines one of the world's hardest and most effective abrasives (aluminum oxide - mohs hardness 9) with the durability and recyclability of Sponge Media and a range of grit sizes to address virtually every application.

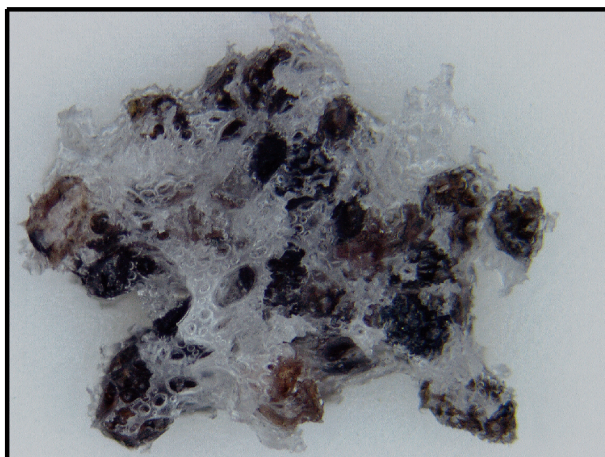
Silver Sponge Media Type:

Silver 30 Sponge Media

Profile: ± 75 micron (± 3 mil) (on mild carbon steel)

Abrasive Agent: 30-Grit

Aluminum Oxide



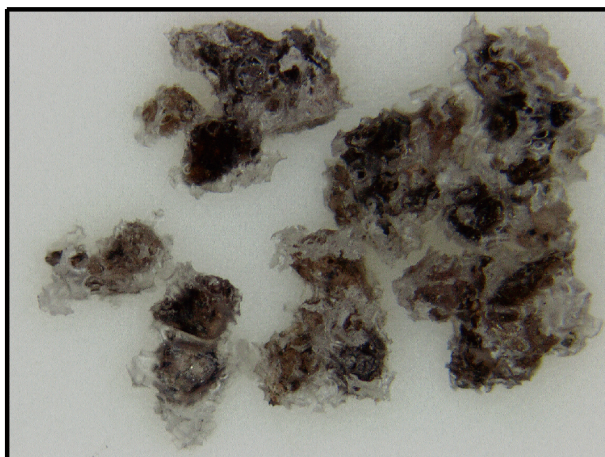
Name	Art. Nummer	Preis	Ab 1 Stk.	Ab 55 Stk.	Ab 330 Stk.
------	-------------	-------	-----------	------------	-------------

Silver 30 DG

Silver Sponge Media™

Combines one of the world's hardest and most effective abrasives (aluminum oxide - mohs hardness 9) with the durability and recyclability of Sponge Media and a range of grit sizes to address virtually every application.

Silver Sponge Media Type:
Silver 30DG Sponge Media (Double Grind (DG) Sponge Media™ abrasives are ground as finer whole particles, with no change to the abrasive)
Profile: ± 75 micron (± 3 mil) (on mild carbon steel)
Abrasive Agent: 30-Grit Aluminum Oxide



Name	Art. Nummer	Preis	Ab 1 Stk.	Ab 55 Stk.	Ab 330 Stk.
------	-------------	-------	-----------	------------	-------------

Silver 60

Silver Sponge Media™

Combines one of the world's hardest and most effective abrasives (aluminum oxide - mohs hardness 9) with the durability and recyclability of Sponge Media and a range of grit sizes to address virtually every application.

Silver Sponge Media Type:

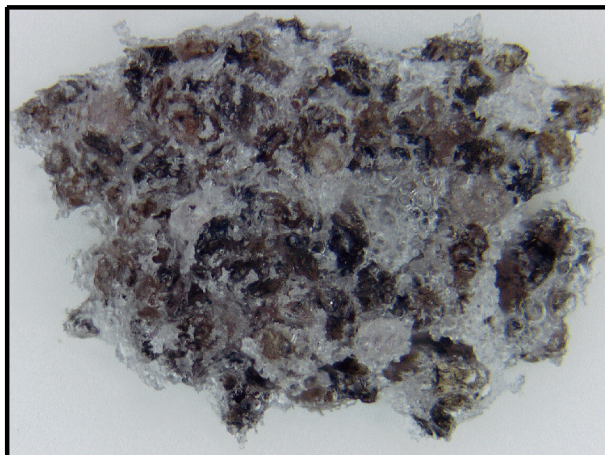
Silver 60 Sponge Media

Profile: $\pm 62,5$ micron (± 2 mil)

(on mild carbon)

Abrasive Agent: 60-Grit

Aluminum Oxide



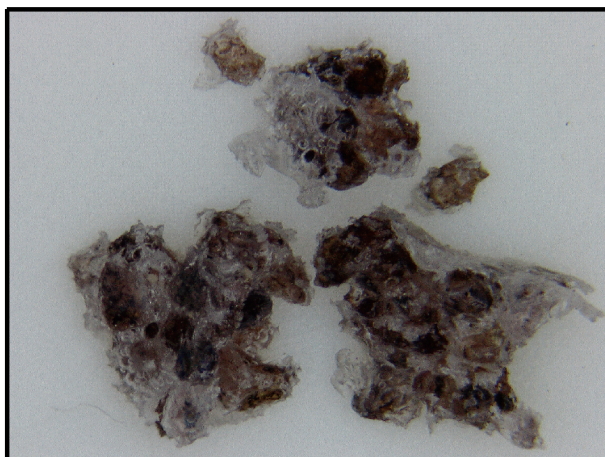
Name	Art. Nummer	Preis	Ab 1 Stk.	Ab 55 Stk.	Ab 330 Stk.
------	-------------	-------	-----------	------------	-------------

Silver 60 DG

Silver Sponge Media™

Combines one of the world's hardest and most effective abrasives (aluminum oxide - mohs hardness 9) with the durability and recyclability of Sponge Media and a range of grit sizes to address virtually every application.

Silver Sponge Media Type:
Silver 60DG Sponge Media (Double Grind (DG) Sponge Media™ abrasives are ground as finer whole particles, with no change to the abrasive)
Profile: $\pm 62,5$ micron (± 2 mil)
(on mild carbon)
Abrasive Agent: 60-Grit
Aluminum Oxide



Name	Art. Nummer	Preis	Ab 1 Stk.	Ab 55 Stk.	Ab 330 Stk.
------	-------------	-------	-----------	------------	-------------

Silver 80

Silver Sponge Media™

Combines one of the world's hardest and most effective abrasives (aluminum oxide - mohs hardness 9) with the durability and recyclability of Sponge Media and a range of grit sizes to address virtually every application.

Silver Sponge Media Type:

Silver 80 Sponge Media

Profile: ± 50 micron (± 2 mil) (on mild carbon steel)

Abrasive Agent: 80-Grit

Aluminum Oxide



Name	Art. Nummer	Preis	Ab 1 Stk.	Ab 55 Stk.	Ab 330 Stk.
------	-------------	-------	-----------	------------	-------------

Silver 120

Silver Sponge Media™

Combines one of the world's hardest and most effective abrasives (aluminum oxide - mohs hardness 9) with the durability and recyclability of Sponge Media and a range of grit sizes to address virtually every application.

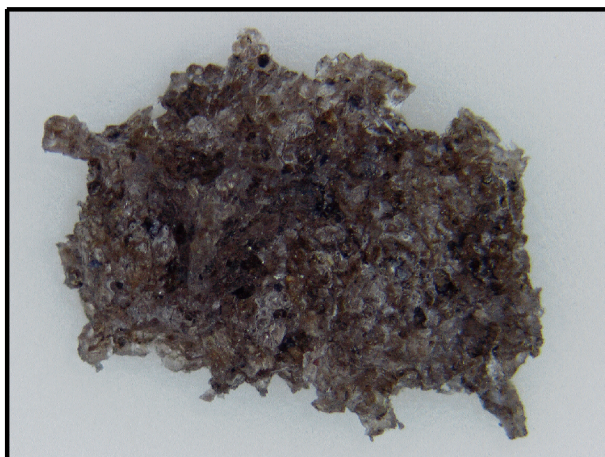
Silver Sponge Media Type:

Silver 120 Sponge Media

Profile: ± 25 micron (± 1 mil) (on mild carbon steel)

Abrasive Agent: 120-Grit

Aluminum Oxide



Name	Art. Nummer	Preis	Ab 1 Stk.	Ab 55 Stk.	Ab 330 Stk.
------	-------------	-------	-----------	------------	-------------

Silver 220

Silver Sponge Media™

Combines one of the world's hardest and most effective abrasives (aluminum oxide - mohs hardness 9) with the durability and recyclability of Sponge Media and a range of grit sizes to address virtually every application.

Silver Sponge Media Type:

Silver 220 Sponge Media

Profile: <25 micron(<1 mil) (on mild carbon steel)

Abrasive Agent: 220-Grit

Aluminum Oxide



Name	Art. Nummer	Preis	Ab 1 Stk.	Ab 55 Stk.	Ab 330 Stk.
------	-------------	-------	-----------	------------	-------------

Silver 320

Silver Sponge Media™

Combines one of the world's hardest and most effective abrasives (aluminum oxide - mohs hardness 9) with the durability and recyclability of Sponge Media and a range of grit sizes to address virtually every application.

Silver Sponge Media Type:

Silver Aero-Alox™ 320 Sponge Media

Profile: <12 micron(<.5 mil) (on mild carbon steel)

Abrasive Agent: 320-Grit

Aluminum Oxide

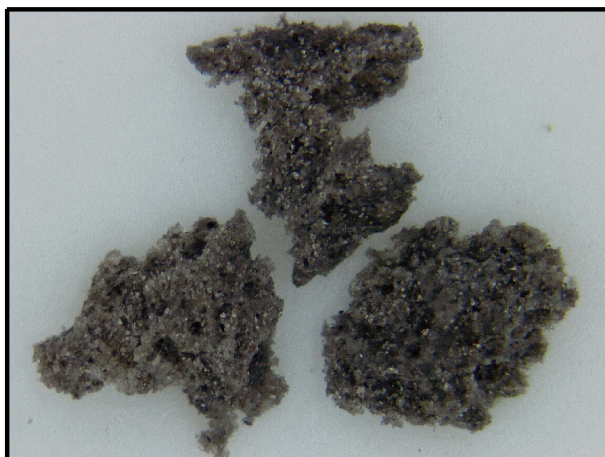


Name	Art. Nummer	Preis	Ab 1 Stk.	Ab 55 Stk.	Ab 330 Stk.
------	-------------	-------	-----------	------------	-------------

Silver 320 DG

Silver Sponge Media™
Combines one of the world's
hardest and most effective
abrasives (aluminum oxide -
mohs hardness 9) with the
durability and recyclability of
Sponge Media and a range of
grit sizes to address virtually
every application.

Silver Sponge Media Type:
Silver Aero-Alox™ 320DG
Sponge Media (Double Grind
(DG) Sponge Media™
abrasives are ground as finer
whole particles, with no change
to the abrasive)
Profile: <12 micron(<.5 mil) (on
mild carbon steel)
Abrasive Agent: 320-Grit
Aluminum Oxide



Name	Art. Nummer	Preis	Ab 1 Stk.	Ab 55 Stk.	Ab 330 Stk.
------	-------------	-------	-----------	------------	-------------

Silver 500

Silver Sponge Media™

Combines one of the world's hardest and most effective abrasives (aluminum oxide - mohs hardness 9) with the durability and recyclability of Sponge Media and a range of grit sizes to address virtually every application.

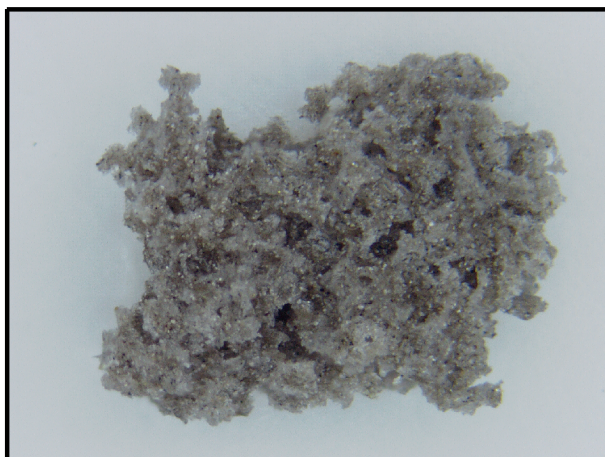
Silver Sponge Media Type:

Silver 500 Sponge Media

Profile: <6 micron (<.25 mil) (on mild carbon steel)

Abrasive Agent: 500-Grit

Aluminum Oxide



Name	Art. Nummer	Preis	Ab 1 Stk.	Ab 55 Stk.	Ab 330 Stk.
------	-------------	-------	-----------	------------	-------------

Red G-40

Red Sponge Media™

Used on heavily rusted steel or for the removal of thick or brittle coatings where removal by impact is required.

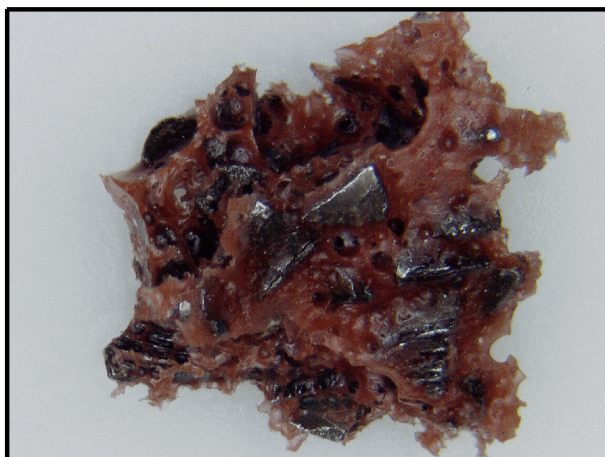
Red Sponge Media Type: Red

G-40 Sponge Media

Profile: 100+ micron(4+ mil) (on mild carbon steel)

Abrasive Agent: G-40 Steel

Grit



Name	Art. Nummer	Preis	Ab 1 Stk.	Ab 55 Stk.	Ab 330 Stk.
------	-------------	-------	-----------	------------	-------------

White Spocc

White Sponge Media™

Providing a unique sensitive substrate solution with minimal to no profiling. Used on a wide range of historic restoration and general industrial applications.

White Sponge Media Type:

White Spocc Sponge Media

Profile: <6 micron (<.25 mil) (on mild carbon steel)

Abrasive Agent: Spherical

Precipitate of Calcium

Carbonate



Name	Art. Nummer	Preis	Ab 1 Stk.	Ab 55 Stk.	Ab 330 Stk.
------	-------------	-------	-----------	------------	-------------

White Plastic

White Sponge Media™

Providing a unique sensitive substrate solution with minimal to no profiling. Used on a wide range of historic restoration and general industrial applications.

White Sponge Media Type:

White Plastic Sponge Media

Profile: None (on mild carbon steel)

Abrasive Agent: 30/40 Mesh, type II Plastic Urea



Name	Art. Nummer	Preis	Ab 1 Stk.	Ab 55 Stk.	Ab 330 Stk.
------	-------------	-------	-----------	------------	-------------

White Glass Bead

White Sponge Media™

Providing a unique sensitive substrate solution with minimal to no profiling. Used on a wide range of historic restoration and general industrial applications.

White Sponge Media Type:

White Glass Bead Sponge Media

Profile: <6 micron (<.25 mil) (on mild carbon steel)

Abrasive Agent: 60/80 Mesh, Glass Bead



Name	Art. Nummer	Preis	Ab 1 Stk.	Ab 55 Stk.	Ab 330 Stk.
------	-------------	-------	-----------	------------	-------------

Green

Green Sponge Media™

Grease and oil removal from hard substrates or heavy machinery without damage to hoses or fittings. Smoke and soot removal from most industrial surfaces, especially concrete and steel.

Green Sponge Media Type:

Green Sponge Media

Profile: <6 micron (<.25 mil) (on mild carbon steel)

Abrasive Agent: Very Mild



Name	Art. Nummer	Preis	Ab 1 Stk.	Ab 55 Stk.	Ab 330 Stk.
------	-------------	-------	-----------	------------	-------------

Blue

Blue Sponge Media™

Used the pure cleaning power of sponge with no added abrasion; to remove soot, smoke damage and other light residue from ultra-sensitive, water intolerable substrates.

Blue Sponge Media Type: Blue
Sponge Media

Profile: 0 micron (<0 mil) (on mild carbon steel)

Abrasive Agent: None



Name	Art. Nummer	Preis	Ab 1 Stk.	Ab 55 Stk.	Ab 330 Stk.
------	-------------	-------	-----------	------------	-------------



Starblast

Name	Art. Nummer	Preis	Ab 1 Stk.	Ab 55 Stk.	Ab 330 Stk.
------	-------------	-------	-----------	------------	-------------

GMA Garnet Sponge Media™

Part#: SJM-GMA-GAR-3060

Moderately Aggressive

Achievable Profile Range:
25-100 μ

This value-oriented Sponge Media product provides reduced recyclability, making it a better choice where full media recovery is not possible.



Name	Art. Nummer	Preis	Ab 1 Stk.	Ab 5 Stk.
------	-------------	-------	-----------	-----------

SPONGE-JET ZUBEHÖR



Saber Blast Nozzle

A revolutionary innovation in abrasive nozzle design, the new Saber Blast™ nozzle increases production speeds up to 50%, using advanced gas dynamic concepts to maximize the velocity of abrasives hitting the surface. By viewing the abrasive and air streams as separate components, engineers were able to create the optimal speed/volume relationship between the two components. They developed a revolutionary nozzle design that accelerates abrasive particles to higher speeds using the same air pressure and flow, thus increasing overall efficiency and productivity.

Higher Abrasive Speed =
Higher Efficiency

A 20% increase in abrasive speed provides a 44% increase in kinetic energy, which positively effects overall production. Without changing compressors or blast equipment, the SaberBlast nozzle accelerates abrasive impact velocity comparable to blasting with 25% more nozzle pressure.

Features specific to SaberBlast nozzles:

- Saves \$3,600 per nozzle compared to traditional long venturi nozzles; based on a 20% savings and \$100/hour operating cost

- Improve production speeds by up to 50%

- Increase abrasive velocity
- Use with conventional abrasives like steel grit, garnet, coal slag and Sponge Media™ abrasives

Blast like having 25% more air pressure

Specification:

Product Name: Saber Blast Nozzle

Part #: SBR-BLST-NOZZ
Weight: 1.3 (2.6 lb) kg (2.60 lb)

Length: 37 cm (15.5 in)
O.D.: 5 cm (1 7/8 in)
G-50 Steel Grit speed: 218 m/sec*

Silver 30 Sponge Media
Speed: 227 m/sec**

Minimum expected nozzle life: 200 hours

Thread Size:

1-1/4 in standard brass thread
or
50 mm coarse aluminum thread

Nozzle size:

#12 18 mm (3/4 in)
#10 16 mm (5/8 in)
#8 12.7 mm (1/2 in)
#7 11 mm (7/16 in)
#6 9.5 mm (3/8 in)

Speed tests performed in laboratory-controlled conditions at 8 bar (116psi) nozzle pressure. Field results may vary.



*Compared to 186 m/sec (610 ft/sec) for conventional long venturi nozzles.

**Compared to 191 m/sec (626 ft/sec) for conventional long venturi nozzles.

Features:

- Liner: composite of silicon nitride and other advanced materials

- Jacket: anodized aluminum on a urethane core

- Anti static design

- Tight, defined nozzle pattern

- Extended blast distance from nozzle exit to substrate

Name	Art. Nummer	Preis	Ab 1 Stk.	Ab 5 Stk.
------	-------------	-------	-----------	-----------

Venturi

Name	Art. Nummer	Preis	Ab 1 Stk.	Ab 5 Stk.
------	-------------	-------	-----------	-----------



Banana Nozzle

Name	Art. Nummer	Preis	Ab 1 Stk.	Ab 5 Stk.
------	-------------	-------	-----------	-----------



Magnetic Seperator

Name	Art. Nummer	Preis	Ab 1 Stk.	Ab 3 Stk.
------	-------------	-------	-----------	-----------



Name	Art. Nummer	Preis	Ab 10 Stk.	Ab 100 Stk.
------	-------------	-------	------------	-------------

SICT BLASTING

Loki 800



TECHNISCHE SPEZIFIKATIONEN

Modell
 Stromversorgung
 Intensität
 Eingangsdruck Min/Max
 Ausgangsdruck Min/Max
 Luftverbrauch
 Art des Düse
 Strahlmittel
 Strahlmittelverbrauch
 Kapazität Strahlmitteltanks
 Maschinengewicht (leer)
 Maße (Länge x Breite x Höhe)
 Garantie
 LOKI 800
 Konformitätserklärung
 LOKI 800
 Technische Spezifikationen
 DOKUMENTE ZUM
 DOWNLOAD

LOKI 800
 12 VDC et 220 V
 3 A
 2 / 10 bar
 0.5 / 8.0 bar
 500 / 11000 l/min
 Ø 6 bis 12 mm
 Alle (app. by SICT)
 1 bis 130 Kg/h
 25 Kg
 46 Kg
 580 x 630 x 1040 mm
 2 Jahre oder 1000 Std

Im Lieferumfang enthalten :

- Strahlrohr 10 m mit Halter
- 1 Boroncarbid-Strahldüse 10 mm
- Einfülltrichter
- Säuberungsschlauch
- Bedienungsanleitung

Die LOKI800 ist unsere multitasking-fähige Maschine. Sie akzeptiert alle Arten von Aggregaten und die vielen Einstellungsmöglichkeiten erlauben es Ihnen alle Arten von Reinigungs- und Sandstrahlarbeiten abzudecken. Ihre kleine Größe macht sie zu einer mobil einsetzbaren Maschine, die ideal für die Benutzung auf Baustellen ist und von nur einer Person bedient werden kann. Dank der elektronischen Schnittstelle, ist dem Benutzer sichergestellt, dieselben Einstellungen vorzufinden. Diese Parameter können auch voreingestellt werden, sodass falsche Benutzung ausgeschlossen werden kann. Dies ist ein weltweit einzigartiges System im

Bereich des Sandstrahlens.

Die folg. Einstellungen können für die LOKI800 vorgenommen werden :

- 7 verschiedene Einstellungen für den Strahlmittelverbrauch
- 7 verschiedene Stufen für den Luftdruck
- Trockene Reinigung = LUFT + STRAHLMITTEL
- Reinigung mit Wasser = LUFT + STRAHLMITTEL + WASSERDUNST

FERNBEDIENUNG

Die LOKI800 ist mit einer Fernbedienung befestigt an dem Auslöser der Strahldüse. Damit können genaue Einstellungen für LUFT, STRAHLMITTEL & WASSER vorgenommen werden. Unsere Fernbedienung erlaubt dem Benutzer einen ständigen Zugang zu Einstellungen sowie die Anpassung der vorgenommenen Einstellungen während der Anwendung. Somit muss der Benutzer nicht zur Maschine zurückkehren. Dadurch wird die Produktivität erhöht.

Einstellungen für LUFT, STRAHLMITTEL & WASSER vorgenommen werden. Unsere Fernbedienung erlaubt dem Benutzer einen ständigen Zugang zu Einstellungen sowie die Anpassung der vorgenommen Einstellungen während der Anwendung. Somit muss der Benutzer nicht zur Maschine zurückkehren. Dadurch wird die Produktivität erhöht.

GERINGE WARTUNG

Die Dosiereinheit benötigt keine regelmäßige Wartung. Unsere Strahldüse und der Schlauch zeigen eine beträchtlich lange Lebensdauer. Die LOKI800 wurde so entwickelt und

hergestellt, dass Wartungsarbeiten direct beim Kunden durchgeführt werden können ohne erst einen Fachmann hinzuziehen zu müssen. Dadurch werden hohe Kosten für die Wartung der Maschine und des Zubehörs vermieden.

MOBILITÄT UND EINSTELLUNGEN

Mobilität ist ein entscheidender Punkt für alle, die an Gebäuden, auf Gerüsten oder Plattformen arbeiten, da das Gerät einfach zu bewegen sein muss. Die LOKI800, kompakt und mit Rädern und Griffen ausgestattet, kann einfach in und aus einem Fahrzeug geladen werden und kann von

nur einer Person in Treppenaufgängen transportiert werden. The settings are very simple and the following information is available to the operator :

Die Einstellungen sind sehr einfach vorzunehmen und Informationen zu den folgenden Punkten sind dem Benutzer verfügbar:

- Verbrauch an Strahlmittel
- Luftdruck
- Voreingestellten zu Strahlmittelverbrauch und Luftdruck
- Batterieanzeige
- Alarm

Name	Art. Nummer	Preis	Ab 1 Stk.	Ab 5 Stk.
------	-------------	-------	-----------	-----------

BUSE TROCKENEISSTRAHLGERÄTE

Buse Booster 15 S

Alle BUSE Jet Trockeneisstrahlanlagen werden nach den bekannten CE-Standards gebaut und die hohe Qualität der BUSE Werke ist nach DIN EN ISO 9001 zertifiziert. Die langjährigen Erfahrungen der BUSE-Gruppe gewährleisten die Einhaltung der Qualitäts- und Sicherheits-Normen und beinhalten auf Wunsch kompetente Schulungen der Betreiber. BUSE - ein internationales Leitbild für "Made in Germany".

Im Lieferumfang enthalten:
Strahlpistole mit Powerdüse
Strahlschlauch mit
Schnellkupplungen
Druckluftschlauch

Empfohlenes Zubehör:
Trockeneissplitter mit Zubehör
Flachdüse
Externe Druckluftregulierung



Name	Art. Nummer	Preis	Ab 1 Stk.	Ab 3 Stk.
------	-------------	-------	-----------	-----------

Buse Booster 20 S

Alle BUSE Jet Trockeneisstrahlanlagen werden nach den bekannten CE-Standards gebaut und die hohe Qualität der BUSE Werke ist nach DIN EN ISO 9001 zertifiziert. Die langjährigen Erfahrungen der BUSE-Gruppe gewährleisten die Einhaltung der Qualitäts- und Sicherheits-Normen und beinhalten auf Wunsch kompetente Schulungen der Betreiber. BUSE - ein internationales Leitbild für "Made in Germany".

Im Lieferumfang enthalten:
Strahlpistole mit Powerdüse
Strahlschlauch mit
Schnellkupplungen
Druckluftschlauch

Empfohlenes Zubehör:
Trockeneissplitter mit Zubehör
Flachdüse
Externe Druckluftregulierung



Name	Art. Nummer	Preis	Ab 1 Stk.	Ab 3 Stk.
------	-------------	-------	-----------	-----------

Buse Booster 20 DP

Alle BUSE Jet Trockeneisstrahlanlagen werden nach den bekannten CE-Standards gebaut und die hohe Qualität der BUSE Werke ist nach DIN EN ISO 9001 zertifiziert. Die langjährigen Erfahrungen der BUSE-Gruppe gewährleisten die Einhaltung der Qualitäts- und Sicherheits-Normen und beinhalten auf Wunsch kompetente Schulungen der Betreiber. BUSE - ein internationales Leitbild für "Made in Germany".

Im Lieferumfang enthalten:
Strahlpistole mit Powerdüse
Strahlschlauch mit
Schnellkupplungen
Druckluftschlauch

Empfohlenes Zubehör:
Trockeneissplitter mit Zubehör
Flachdüse

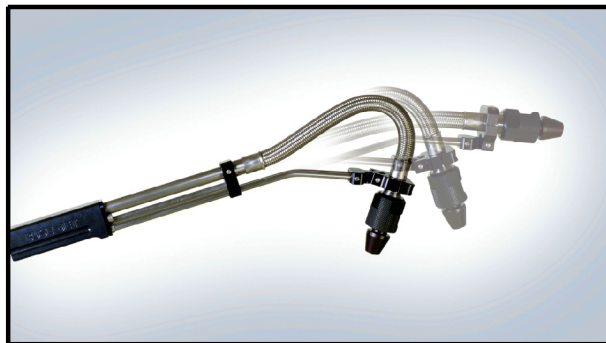


Name	Art. Nummer	Preis	Ab 1 Stk.	Ab 3 Stk.
------	-------------	-------	-----------	-----------

BUSE ZUBEHÖR



Strahllanze BJJL 750



Neuheit in der
Trockeneisreinigungstechnik

Eine patentierte Strahllanze zur
Reinigung von Oberflächen
mittels Trockeneispellets.

Durch Ziehen oder Drücken
des Griffes an der Strahllanze
kann der Anwender zielgenau
Beläge bzw. Verunreinigungen
ohne große Anstrengungen
entfernen. Das erspart nicht
nur Zeit, Kraft und Mühe,
sondern es ist auch ein sehr
großer Schritt in der
Arbeitssicherheit. Der
Anwender kann die Reinigung
in einer Entfernung von ca. 600
mm durchführen, und ist somit
weder der teilweise großen
Hitze der zu reinigenden
Formen, noch den

gegebenenfalls.
zurückprallenden Partikeln
bzw. Verunreinigungen
ausgesetzt.



Name	Art. Nummer	Preis	Ab 1 Stk.	Ab 3 Stk.
------	-------------	-------	-----------	-----------

Schlauchwagen BJS 20

Für Ordnung und Sicherheit am Arbeitsplatz. Mit Automatik Schlauchaufroller, 20 m Druckluftschlauch bis 20 bar, Schnellkupplungen und Fahrwagen. Der Schlauch arretiert sich bei der gewünschten Auszugslänge automatisch. Durch nochmaliges Ziehen rollt er sich wieder auf.



Name	Art. Nummer	Preis	Ab 1 Stk.	Ab 3 Stk.
------	-------------	-------	-----------	-----------

Buse Trockeneisbehälter BJT 100

Abmessungen:

Außen

Länge: 800 mm

Breite: 600 mm

Höhe: 570 mm

Innen

Länge: 663 mm

Breite: 456 mm

Höhe: 420 mm

Isolation

Stärke: ca. 70 mm

Material: Extrudierter

PP-Schaum

Inhalt: ca. 100 kg 3 mm Pellets

Eigengewicht: ca. 10,5 kg

Einsatz

Zur Lagerung von Trockeneis.

Ist aus stoßfestem,

umweltfreundlichen

EPP-Schaum

gefertigt. Ihr hoher

Isolationswert beschränkt den

Trockeneisverlust durch

Sublimation

auf ein Minimum.



Name	Art. Nummer	Preis	Ab 1 Stk.	Ab 6 Stk.
------	-------------	-------	-----------	-----------

Fahrwagen für BJT

Name	Art. Nummer	Preis	Ab 1 Stk.	Ab 6 Stk.
------	-------------	-------	-----------	-----------



DüSEN

Performer 200

Performer 200 - Engineered
Ceramic - Economical Solution

Wear-resistant Venturi blasting
nozzles made of Engineered
Ceramic.

Service life — up to 200 h.

Cover: Polyurethane.

Thread: Polyurethane, 50 mm
for NHP nozzle holder.

Entry size: 32 mm.

Ordering codes

Performer 200

Wear-resistant Venturi blasting
nozzles made of Engineered
Ceramic.

Service life — up to 200 h.

Cover: Polyurethane.

Thread: Polyurethane, 50 mm
for NHP nozzle holder.

Entry size: 32 mm.



Article Type Description

Name	Art. Nummer	Preis	Ab 1 Stk.
Performer 200 x 6.5 Venturi nozzle, Engineered Ceramic, 6.5 mm x 130 mm	13012		
Performer 200 x 8.0 Venturi nozzle, Engineered Ceramic, 8.0 mm x 150 mm	13013		
Performer 200 x 9.5 Venturi nozzle, Engineered Ceramic, 9.5 mm x 170 mm	13014		
Performer 200 x 11.0 Venturi nozzle, Engineered Ceramic, 11.0 mm x 200 mm	13015		
Performer 200 x 12.5 Venturi nozzle, Engineered Ceramic, 12.5 mm x 210 mm	13016		

Performer 400

Performer 400 - Tungsten
Carbide - For Raw Conditions

Wear-resistant Venturi blasting
nozzles made of Tungsten
Carbide.

Service life — up to 400 h.

Cover: Polyurethane.

Thread: Polyurethane, 50 mm
for NHP nozzle holder.

Entry size: 32 mm.

Ordering codes

Article Type Description



Name	Art. Nummer	Preis	Ab 1 Stk.
Performer 400 x 6.5 Venturi nozzle, Tungsten Carbide, 6.5 mm x 130 mm	13022		
Performer 400 x 9.5 Venturi nozzle, Tungsten Carbide, 9.5 mm x 170 mm	1302		
Performer 400 x 11.0 Venturi nozzle, Tungsten Carbide, 11.0 mm x 200 mm	13024		
Performer 400 x 12.5 Venturi nozzle, Tungsten Carbide, 12.5 mm x 210 mm	13025		

Performer 600

Performer 600 - Silicon Carbide
- Professional Choice

Wear-resistant Venturi blasting
nozzles made of Silicon
Carbide.

Service life — up to 600 h.

Cover: Polyurethane.

Thread: Polyurethane, 50 mm
for NHP nozzle holder.

Entry size: 32 mm.

Ordering codes

Article Type Description



Name	Art. Nummer	Preis	Ab 1 Stk.
Performer 600 x 6.5 Venturi nozzle, Silicon Carbide, 6.5 mm x 130 mm	13032		
Performer 600 x 8.0 Venturi nozzle, Silicon Carbide, 8.0 mm x 150 mm	13033		
Performer 600 x 9.5 Venturi nozzle, Silicon Carbide, 9.5 mm x 170 mm	13034		
Performer 600 x 11.0 Venturi nozzle, Silicon Carbide, 11.0 mm x 200 mm	13035		
Performer 600 x 12.5 Venturi nozzle, Silicon Carbide, 12.5 mm x 210 mm	13036		

Performer 800

Performer 800 - Silicon Nitride -
For Aggressive Medias

Wear-resistant Venturi blasting
nozzles made of Silicon Nitride.
Service life — up to 800 h.
Cover: Polyurethane.
Thread: Polyurethane, 50 mm
for NHP nozzle holder.
Entry size: 32 mm.

Ordering codes
Article Type Description



Name	Art. Nummer	Preis	Ab 1 Stk.
Performer 800 x 6.5 Venturi nozzle, Silicon Nitride, 6.5 mm x 130 mm	13042		
Performer 800 x 8.0 Venturi nozzle, Silicon Nitride, 8.0 mm x 150 mm	13043		
Performer 800 x 9.5 Venturi nozzle, Silicon Nitride, 9.5 mm x 170 mm	13044		
Performer 800 x 11.0 Venturi nozzle, Silicon Nitride, 11.0 mm x 200 mm	13045		
Performer 800 x 12.5 Venturi nozzle, Silicon Nitride, 12.5 mm x 210 mm	13046		

Performer 1000

Performer 1000 - Boron
Carbide - Extreme Long
Lasting

Wear-resistant Venturi blasting
nozzles made of Boron
Carbide.

Service life — up to 1000 h.

Cover: Polyurethane.

Thread: Polyurethane, 50 mm
for NHP nozzle holder.

Entry size: 32 mm.

Ordering codes

Article Type Description



Name	Art. Nummer	Preis	Ab 1 Stk.
Performer 1000 x 6.5 Venturi nozzle, Boron Carbide, 6.5 mm x 130 mm	13052		
Performer 1000 x 8.0 Venturi nozzle, Boron Carbide, 8.0 mm x 150 mm	13053		
Performer 1000 x 9.5 Venturi nozzle, Boron Carbide, 9.5 mm x 170 mm	13054		
Performer 1000 x 11.0 Venturi nozzle, Boron Carbide, 11.0 mm x 200 mm	13055		
Performer 1000 x 12.5 Venturi nozzle, Boron Carbide, 12.5 mm x 210 mm	13056		

RTC

Nozzles Type RTC

Service life — up to 400 h.

Cover: Rubber.

Thread: Rubber, 50 mm for

NHP nozzle holder.

Entry size: 32 mm

Wear-resistant Venturi blasting
nozzles made of tungsten
carbide (TC).

Service life — up to 400 h.

Cover: Rubber.

Thread: Rubber, 50 mm for

NHP nozzle holder.

Entry size: 32 mm

Order code Model Description



Name	Art. Nummer	Preis	Ab 1 Stk.
RTC-6.5 Venturi nozzle, tungsten carbide, 6.5 mm x 130 mm	12062		
RTC-8.0 Venturi nozzle, tungsten carbide, 8.0 mm x 150 mm	12063		
RTC-9.5 Venturi nozzle, tungsten carbide, 9.5 mm x 170 mm	12064		
RTC-11.0 Venturi nozzle, tungsten carbide, 11.0 mm x 200 mm	12065		
RTC-12.5 Venturi nozzle, tungsten carbide, 12.5 mm x 210 mm	12066		

CTC

Nozzle Type CTC

Wear-resistant Venturi blasting nozzles made of tungsten carbide (TC).

Service life — up to 400 h.

Cover: Aluminum /Rubber.

Thread: Aluminum, 50 mm for NHP nozzle holder.

Entry size: 32 mm

Order code Model Description



Name	Art. Nummer	Preis	Ab 1 Stk.
CTC-6.5 Venturi nozzle, tungsten carbide, 6.5 mm x 130 mm	12542		
CTC-8.0 Venturi nozzle, tungsten carbide, 8.0 mm x 150 mm	12543		
CTC-9.5 Venturi nozzle, tungsten carbide, 9.5 mm x 170 mm	12544		
CTC-11.0 Venturi nozzle, tungsten carbide, 11.0 mm x 200 mm	12545		
CTC-12.5 Venturi nozzle, tungsten carbide, 12.5 mm x 210 mm	12546		

STC

Nozzle Type STC

Wear-resistant short Venturi blasting nozzles made of tungsten carbide (TC).

Service life - up to 400 h.

Cover: Rubber

Thread: Rubber, 50 mm for

NHP nozzle holder

Entry size: 25 mm

Order code Model Description



Name	Art. Nummer	Preis	Ab 1 Stk.	.
STC-5.0 Short Venturi nozzle, tungsten carbide, 5.0 mm x 80 mm	12571			
STC-6.5 Short Venturi nozzle, tungsten carbide, 6.5 mm x 80 mm	12571			
STC-8.0 Short Venturi nozzle, tungsten carbide, 8.0 mm x 80 mm	12572			
STC-9.5 Short Venturi nozzle, tungsten carbide, 9.5 mm x 80 mm	12573			
STC-11.0 Short Venturi nozzle, tungsten carbide, 11.0 mm x 80 mm	12574			
STC-12.5 Short Venturi nozzle, tungsten carbide, 12.5 mm x 80 mm	12575			

MTC

Nozzle Type MTC

Wear-resistant short Venturi blasting nozzles made of tungsten carbide (TC).

Service life - up to 400 h.

Cover: Aluminum

Thread: Aluminium, 50 mm for NHP nozzle holder

Entry size: 25 mm

Order code Model Description



Name	Art. Nummer	Preis	Ab 10 Stk.	Ab 100 Stk.
MTC-5.0 Short Venturi nozzle, tungsten carbide, 5.0 mm x 80 mm	12560			
MTC-6.5 Short Venturi nozzle, tungsten carbide, 6.5 mm x 80 mm	12561			
MTC-8.0 Short Venturi nozzle, tungsten carbide, 8.0 mm x 80 mm	12562			
MTC-9.5 Short Venturi nozzle, tungsten carbide, 9.5 mm x 80 mm	12563			
MTC-11.0 Short Venturi nozzle, tungsten carbide, 11.0 mm x 80 mm	12564			
MTC-12.5 Short Venturi nozzle, tungsten carbide, 12.5 mm x 80 mm	12565			

DVTC

Nozzle Type DVTC

Wear-resistant Double Venturi blasting nozzles made of tungsten carbide (TC).

Service life —up to 400 h.

Cover: Aluminum

/Polyurethane protector.

Thread: Aluminum, 50 mm for NHP nozzle holder.

Entry size: 32 mm

Order code Model Description



Name	Art. Nummer	Preis	Ab 10 Stk.	Ab 100 Stk.
DVTC-6.5 Double Venturi nozzle, tungsten carbide, 6.5 mm x 130 mm	12092			
DVTC-8.0 Double Venturi nozzle, tungsten carbide, 8.0 mm x 150 mm	12093			
DVTC-9.5 Double Venturi nozzle, tungsten carbide, 9.5 mm x 170 mm	12094			
DVTC-11.0 Double Venturi nozzle, tungsten carbide, 11.0 mm x 200 mm	12095			
DVTC-12.5 Double Venturi nozzle, tungsten carbide, 12.5 mm x 210 mm	12096			

GTC

Nozzle Type GTC

Wear-resistant Venturi type
hose insert nozzles made of
tungsten carbide (TC).
Special designed for using with
blast hose ID=25 mm
Service life — up to 400 h.
Jacket: Aluminum.

Order code Model Description



Name	Art. Nummer	Preis	Ab 10 Stk.	Ab 100 Stk.
Name				
GTC-5.0 Venturi nozzle, tungsten carbide, 5.0 mm x 100 mm	12031			
GTC-6.5 Venturi nozzle, tungsten carbide, 6.5 mm x 100 mm	12032			
GTC-8.0 Venturi nozzle, tungsten carbide, 8.0 mm x 100 mm	12033			

HTC

Nozzle Type HTC

Wear-resistant Venturi type
hose insert nozzles made of
tungsten carbide (TC).
Special designed for using with
blast hose ID=32 mm
Service life — up to 400 h.
Jacket: Aluminum

Order code Model Description



Name	Art. Nummer	Preis	Ab 10 Stk.	Ab 100 Stk.
HTC-6.5 Venturi nozzle, tungsten carbide, 6.5 mm x 120 mm	12502			
HTC-8.0 Venturi nozzle, tungsten carbide, 8.0 mm x 120 mm	12503			
HTC-9.5 Venturi nozzle, tungsten carbide, 9.5 mm x 120 mm	12504			
HTC-11.0 Venturi nozzle, tungsten carbide, 11.0 mm x 120 mm	12505			
HTC-12.5 Venturi nozzle, tungsten carbide, 12.5 mm x 120 mm	12506			

BTC

Nozzle Type BTC

Highly wear-resistant angle type blasting nozzles. Made from tungsten carbide (TC).
Lifetime: Up to 400 h.
Jacket: Aluminum / Polyurethane protector
Thread: 50-mm coarse rubber thread.

Bending nozzles are used for getting inside tight or hard to reach places like corners, behind flanges or inside pipes. BTC type bending nozzles are compact and shoot out the abrasive at 45° angles. Made from tungsten carbide (TC). Fits all Contracor nozzle holders.



Order code Model Description

Name	Art. Nummer	Preis	Ab 10 Stk.	Ab
BTC-9.5 Bending nozzle, tungsten carbide, angle 45°, 9.5 mm x 125 mm	12583			
BTC-11.0 Bending nozzle, tungsten carbide, angle 45°, 11.0 mm x 125 mm	12584			
BTC-12.5 Bending nozzle, tungsten carbide, angle 45°, 12.5 mm x 125 mm	12585			

NTC

Nozzle Type NTC

Service life - up to 400 h.

Cover: Aluminum

Thread: Aluminium, $\frac{3}{4}$ "
for NHP-0 nozzle holder.

Wear-resistant short Venturi
blasting nozzles made of
tungsten carbide (TC).

Order code Model Description



Name	Art. Nummer	Preis	Ab 10 Stk.	Ab 100 Stk.
NTC-3.5 Short Venturi nozzle, tungsten carbide, 3.5 mm x 45 mm	12550			
NTC-5.0 Short Venturi nozzle, tungsten carbide, 5.0 mm x 45 mm	12551			
NTC-6.5 Short Venturi nozzle, tungsten carbide, 6.5 mm x 45 mm	12552			
NTC-8.0 Short Venturi nozzle, tungsten carbide, 8.0 mm x 45 mm	12553			

SBC

Nozzle Type SBC

Wear-resistant Venturi blasting nozzles made of boron carbide (B₄C).

Service life — up to 1000 h.

Cover: Aluminum

/Polyurethane protector.

Thread: Aluminum, 50 mm for NHP nozzle holder.

Entry size: 25 mm

Order code Model Description



Name	Art. Nummer	Preis	Ab 10 Stk.	Ab 100 Stk.
SBC-5.0 Venturi nozzle, boron carbide, 5.0 mm x 120 mm	12051			
SBC-6.5 Venturi nozzle, boron carbide, 6.5 mm x 130 mm	12052			
SBC-8.0 Venturi nozzle, boron carbide, 8.0 mm x 150 mm	12053			

UBC

Nozzle Type UBC

Service life — up to 1000 h.

Cover: Aluminum

/Polyurethane protector.

Thread: Aluminum, 50 mm for
NHP nozzle holder.

Entry size: 32 mm

Wear-resistant Venturi blasting
nozzles made of boron carbide
(B₄C).

Service life — up to 1000 h.

Cover: Aluminum

/Polyurethane protector.

Thread: Aluminum, 50 mm for
NHP nozzle holder.

Entry size: 32 mm

CHOICE OF NOZZLE
MATERIAL

In the case of rough handling
and use of and mineral or
coal slag abrasives, tungsten
carbide nozzles are the best
choice for durability and
economy.

Boron carbide nozzles offer
long life with optimum air and
abrasive use. Boron carbide is
best suited for aggressive
abrasives such as aluminum
oxide and selected mineral
aggregates.

The desirable hardness
characteristics of boron carbide
give nozzles made of this
material the longest wear life of

APPROXIMATE SERVICE



LIFE IN HOURS

Order code Model Description

Name	Art. Nummer	Preis	Ab 10 Stk.	Ab 100 Stk.
UBC-6.5 Venturi nozzle, boron carbide, 6.5 mm x 130 mm	12022			
UBC-8.0 Venturi nozzle, boron carbide, 8.0 mm x 150 mm	12023			
UBC-9.5 Venturi nozzle, boron carbide, 9.5 mm x 170 mm	12024			
UBC-11.0 Venturi nozzle, boron carbide, 11.0 mm x 200 mm	12025			
UBC-12.5 Venturi nozzle, boron carbide, 12.5 mm x 210 mm	12026			

DVBC

Nozzle Type DVBC

Wear-resistant Double Venturi blasting nozzles made of boron carbide (B₄C).

Service life — up to 1000 h.

Cover: Aluminum

/Polyurethane protector.

Thread: Aluminum, 50 mm for NHP nozzle holder.

Entry size: 32 mm

Order code Model Description



Name	Art. Nummer	Preis	Ab 10 Stk.	Ab 100 S
DVBC-6.5 Double Venturi nozzle, boron carbide, 6.5 mm x 130 mm	12042			
DVBC-8.0 Double Venturi nozzle, boron carbide, 8.0 mm x 150 mm	12043			
DVBC-9.5 Double Venturi nozzle, boron carbide, 9.5 mm x 170 mm	12044			
DVBC-11.0 Double Venturi nozzle, boron carbide, 11.0 mm x 200 mm	12045			
DVBC-12.5 Double Venturi nozzle, boron carbide, 12.5 mm x 210 mm	12046			

GBC

Nozzle Type GBC

Wear-resistant Venturi blasting nozzles made of boron carbide (B₄C).

Special designed for using with blast hose ID=25 mm

Service life — up to 1000 h.

Jacket: Aluminum.

Order code Model Description



Name	Art. Nummer	Preis	Ab 10 Stk.	Ab 100 Stk.
GBC-5.0 Venturi nozzle, boron carbide, 5.0 mm x 100 mm	12071			
GBC-6.5 Venturi nozzle, boron carbide, 6.5 mm x 100 mm	12072			
GBC-8.0 Venturi nozzle, boron carbide, 8.0 mm x 100 mm	12073			

HBC

Nozzle Type HBC

Wear-resistant Venturi blasting nozzles made of boron carbide (B₄C).

Special designed for using with blast hose ID=32 mm

Service life — up to 1000 h.

Jacket: Aluminum.

Order code Model Description



Name	Art. Nummer	Preis	Ab 10 Stk.	Ab 100 Stk.
HBC-6.5 Venturi nozzle, boron carbide, 6.5 mm x 120 mm	12082			
HBC-8.0 Venturi nozzle, boron carbide, 8.0 mm x 120 mm	12083			
HBC-9.5 Venturi nozzle, boron carbide, 9.5 mm x 120 mm	12084			
HBC-11.0 Venturi nozzle, boron carbide, 11.0 mm x 120 mm	12085			
HBC-12.5 Venturi nozzle, boron carbide, 12.5 mm x 120 mm	12086			

ATC

Nozzle Type ATC

Highly wear-resistant angle type blasting nozzles. Made from tungsten carbide (TC). Lifetime: Up to 400 h. Jacket: Rubber. Thread: 50-mm coarse rubber thread.

Angle nozzles are used for getting inside tight or hard to reach places like corners, behind flanges or inside pipes. ATC type angle nozzles are compact and shoot out the abrasive at 45° angles. Made from tungsten carbide (TC). Fits all Contracor nozzle holders.



Order code Model Description

Name	Art. Nummer	Preis	Ab 10 Stk.	Ab 100 Stk.
ATC-5.0-1 Angle nozzles, tungsten carbide, bore 1x45°	12511			
ATC-6.5-1 Angle nozzles, tungsten carbide, bore 1x45°	12512			
ATC-8.0-1 Angle nozzles, tungsten carbide, bore 1x45°	12513			
ATC-9.5-1 Angle nozzles, tungsten carbide, bore 1x45°	12514			
ATC-5.0-2 Angle nozzles, tungsten carbide, bore 2x45°	12521			
ATC-6.5-2 Angle nozzles, tungsten carbide, bore 2x45°	12522			
ATC-8.0-2 Angle nozzles, tungsten carbide, bore 2x45°	12523			
ATC-9.5-2 Angle nozzles, tungsten carbide, bore 2x45°	12524			
ATC-5.0-3 Angle nozzles, tungsten carbide, bore 3x45°	12531			
ATC-6.5-3 Angle nozzles, tungsten carbide, bore 3x45°	12532			
ATC-8.0-3 Angle nozzles, tungsten carbide, bore 3x45°	12533			
ATC-9.5-3 Angle nozzles, tungsten carbide, bore 3x45°	12534			

PTC-360°

Nozzle Type PTC-360°

Internal Pipe

Blasting Nozzles Type

PTC-360°

Order code Model Description

12519 Exchangeable deflection tip for PTC- 360°, tungsten carbide
Internal pipe blasting nozzles type PTC-360° are designed to blast clean the interior of pipes ranging in size from 2" to 5" I.D. The nozzle connected an abrasive blast machine in place of a standard nozzle. In operation, the PTC-360° nozzle directs the air/abrasive mixture at a deflection tip.

This tip causes the blast pattern to fan out into a wide, circular pattern, which cleans the inside of the pipe as the nozzle is passed through.

Made from tungsten carbide (TC).

Fits all Contracor nozzle holders

CHARACTERISTICS.

Highly wear-resistant angle type blasting nozzles.

Made from tungsten carbide (TC).

Lifetime: Up to 400 h.

Jacket: Aluminum.

Thread: Aluminum, 50 mm for NHP nozzle holder.



Order code Model Description

12510 PTC-360° Internal pipe blasting nozzle, tungsten carbide, 8.0mm x 75mm

12519 Exchangeable deflection tip for PTC- 360°, tungsten carbide

Name	Art. Nummer	Preis	Ab 10 Stk.	Ab 1
PTC-360° Internal pipe blasting nozzle, tungsten carbide, 8.0mm x 75mm	12510			

PTC-360°L

Nozzle Type PTC-360°L

Internatl Pipe

Blasting Nozzles Type

PTC-360°L

Internal pipe blasting nozzles
type PTC-360°L are

designed to blast clean the
interior of pipes ranging in
size from 3/4" to 2" I.D.

The nozzle connected an
abrasive blast machine in
place of a standard nozzle. In
operation, the PTC-360°L
nozzle directs the air/abrasive
mixture at a deflection
tip. This tip causes the blast
pattern to fan out into a
wide, circular pattern, which
cleans the inside of the
pipe as the nozzle is passed
through. The length of the

working area is 200 mm.

Made from tungsten carbide
(TC).

Fits all Contracor nozzle
holders

CHARACTERISTICS.

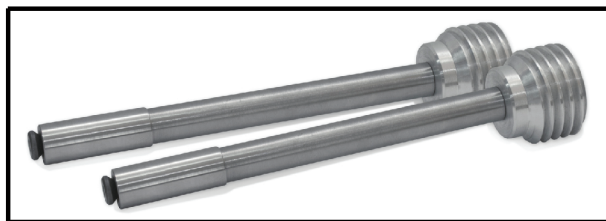
Highly wear-resistant angle
type blasting nozzles.

Made from tungsten carbide
(TC).

Lifetime: Up to 400 h.

Jacket: Aluminum.

Thread: Aluminum, 50 mm for
NHP nozzle holder.



Order code Model Description
12520 PTC- 360°L Internal
pipe blasting nozzle, tungsten
carbide, 5.0 mm x 200 mm
12529 Exchangeable
deflection tip for PTC- 360°L,
tungsten carbide

Name	Art. Nummer	Preis	Ab 10 Stk.	Ab 100 Stk.
------	-------------	-------	------------	-------------

Water blast attachment WBA

Nozzle Type Water blast attachment WBA Contracor® water blast equipment has been specifically designed to meet growing customer demand for a multi-purpose cleaning system that is fast, economical and environment-friendly.

FIELD OF APPLICATION

Dust-reducing high-performance cleaning of steel, stone and concrete surfaces. Cleaning up to grade SA-3.0. Performance up to 20% higher than dry blasting.

DESIGNED TO WORK WITH any water matching abrasives, max. grain size 3,5 mm.

Universal Water Blast Attachment. Sleeve made from high grade tungsten carbide. Fits all Contracor® blast nozzles. Jacket: Aluminum Thread: 50-mm coarse aluminum thread.



Order code Model Description
12000 WBA Water Blast Attachment, tungsten carbide sleeve

Name	Art. Nummer	Preis	Ab 10 Stk.	Ab 100 Stk.
------	-------------	-------	------------	-------------

Water blast nozzles type WBN

Nozzle Type Water blast
nozzles type WBN
Contracor® water blast
equipment has been
specifically designed to meet
growing customer demand for
a multi-purpose
cleaning system that is fast,
economical and
environment-friendly.

FIELD OF APPLICATION

Dust-reducing
high-performance cleaning of
steel, stone
and concrete surfaces.
Cleaning up to grade SA-3.0.
Performance up to 20% higher
than dry blasting.

DESIGNED TO WORK WITH
any water matching abrasives,
max. grain size 3,5 mm.

Water blast nozzles for wet
blast applications. Made from
high grade tungsten carbide.
Jacket: Aluminum
Thread: 50-mm coarse
aluminum thread.

Order code Model Description
12002 WBN-6.5 Water blast
nozzle, tungsten carbide, dia.

6.5, entry 32 mm
12003 WBN-8.0 Water blast
nozzle, tungsten carbide, dia.
8.0, entry 32 mm
12004 WBN-9.5 Water blast
nozzle, tungsten carbide, dia.
9.5, entry 32 mm



Name	Art. Nummer	Preis	Ab 10 Stk.	Ab 100 Stk.
------	-------------	-------	------------	-------------



DÜSENHALTER

NHP

Nozzle Holders NHP

For abrasive blasting hoses with.

Material: nylon.

Thread 50 mm – suitable for the tread of

CONTRACOR® nozzles.

Equipped with a rubber washer and screws.

Order code Model Description

12209 NHP-0 Nylon nozzle holder, for hose diameter 13 x 27 mm

12200 NHP-3/4 Nylon nozzle holder, for hose diameter 19 x 33 mm

12201 NHP-1 Nylon nozzle holder, for hose diameter 25 x 39 mm

12202 NHP-2 Nylon nozzle holder, for hose diameter 32 x 48 mm

Order code Description

12208 Rubber gasket for NHP-0

12207 Rubber gasket for NHP-3/4

12203 Rubber gasket for NHP-1

12204 Rubber gasket for NHP-2



Name	Art. Nummer	Preis	Ab 10 Stk.	Ab 100 Stk.
------	-------------	-------	------------	-------------

CQP

Hose Couplings CQP

For abrasive blasting hoses with. Compatible with hose couplings CFT on CONTRACOR® abrasive blasting machines.

Material: nylon.

Delivery: rubber washer, screws, safety clip.

Order code	Model	Description
12309	CQP-0	Nylon hose coupling, for hose diameter 13 x 27 mm
12300	CQP-3/4	Nylon hose coupling, for hose diameter 19 x 33 mm
12301	CQP-1	Nylon hose coupling, for hose diameter 25 x 39 mm
12302	CQP-2	Nylon hose coupling, for hose diameter 32 x 48 mm



CQT-1 / CQT-2 / CFT-1

Order code	Description
10981	Rubber gasket for CQP-0 / CQT-0 / CFT-0
12307	Rubber gasket for CQP-3/4
12303	Rubber gasket for CQP-1 / CQP-2
10980	Rubber gasket for

Name	Art. Nummer	Preis	Ab 10 Stk.	Ab 100 Stk.
------	-------------	-------	------------	-------------

CQT

Hose Couplings CQT

For abrasive blasting hoses with. Compatible with hose couplings CFT on CONTRACOR® abrasive blasting machines.

Material: metal.

Delivery: rubber washer, screws, safety clip.

Order code Model Description

12319 CQT-0 Malleable iron hose couplings, zinc plated, yellow passivated,

for hose diameter 13 x 27 mm

12311 CQT-1 Malleable iron hose couplings, zinc plated, yellow passivated,

for hose diameter 25 x 39 mm

12312 CQT-2 Malleable iron hose couplings, zinc plated, yellow passivated,

for hose diameter 32 x 48 mm

Order code Description

10981 Rubber gasket for CQP-0 / CQT-0 / CFT-0

12307 Rubber gasket for CQP-3/4

12303 Rubber gasket for CQP-1 / CQP-2

10980 Rubber gasket for CQT-1 / CQT-2 / CFT-1



Name	Art. Nummer	Preis	Ab 10 Stk.	Ab 100 Stk.
------	-------------	-------	------------	-------------



STRAHLSCHLÄUCHE

Extra Blast

ABRASION RESISTANCE

According to DIN 53516:

Max. 60 mm³

Avg. 52 mm³.

TUBE

Black conductive NR –
abrasion resistant.

REINFORCEMENT

High tensile textile cords.

COVER

Black conductive SBR/NR
blend – abrasion and ozone
resistant – pin pricked.

TEMPERATURE

–30°C +80°C.

NOTE

Tolerances according to “RMA”
class 311-A.

SAFETY FACTOR 3:1.



Order code Model Description

Name	Art. Nummer	Preis	Ab 10 Stk.
ExtraBlast-13 Abrasive Blast Hoses 13x27, roll 5m	12110		
ExtraBlast-13 Abrasive Blast Hoses 13x27, roll 20m	12111		
ExtraBlast-13 Abrasive Blast Hoses 13x27, roll 40m	12109		
	12112		
ExtraBlast-19 Abrasive Blast Hoses 19x33, roll 40m	12100		
ExtraBlast-25 Abrasive Blast Hoses 25x39, roll 20m	12113		
ExtraBlast-25 Abrasive Blast Hoses 25x39, roll 40m	12101		
ExtraBlast-32 Abrasive Blast Hoses 32x48, roll 20m	12114		
ExtraBlast-32 Abrasive Blast Hoses 32x48, roll 40m	12102		



LUFTSCHLÄUCHE

Airflex

Special build for heavy duty applications such as sandblasting.

mm) / textile wrapped (32—38 mm).

51004 AirFlex-32 Compressed Air Hoses 32x48, roll 40m

CHARACTERISTICS.

Working pressure: 12 bar

Burst pressure: 36 bar

Working temperature: -30°C to +80°C.

Cover: yellow rubber (19—25

Order code Model Description

51002 AirFlex-19 Compressed Air Hoses 19x28, roll 40m

51003 AirFlex-25 Compressed Air Hoses 25x36, roll 40m

51005 AirFlex-38 Compressed

Air Hoses 38x54, roll 40m

Name	Art. Nummer	Preis	Ab 10 Stk.	Ab 100 Stk.
------	-------------	-------	------------	-------------



SCHLAUCHSICHERUNG

Schlauchsicherungskabel

Blast Hose Whipcheck Safety Cables

Contracor® blast hose

Whipcheck Safety Cables are used at all blast hoses for the safe holding of coupled connections in case of accidental separation.

The Whipcheck Safety Cables relieve the couplings of the weight of the hose and reduce the danger caused by hose couplings failure. The Cables also help keeping the blast hose from whipping about in the event of a coupling failure. Hose couplings may separate from air and blast hoses for a variety of reasons:

- Coupling screws may lose their holding power due to internal wear on the hose tubing
- Use of improper coupling screws may interfere with the proper fit between couplings and hose
- Hose outer diameter may be too small for the coupling
- The continual strain caused by pulling hoses around job sites can weaken the coupling's grip on the hose

- Couplings can also have been damaged by vehicles or other equipment.

Whipcheck Safety Cables are strongly recommended by vertical applications, when air and blast hoses are suspended. Hose couplings are not designed to support the weight of the hose.

Additional supports are required to relieve the added tension.

Constructed of corrosion resistant, high strength steel, Whipcheck Safety Cables may be installed on hose-to-hose and hose-to-fixed coupling connections.

INSTRUCTIONS OF USE:

Attach blast hose safety cables at all coupled connections.

Before connecting the couplings, pull back the



spring-loaded loop, slip it over the blast hoses only (not the remote control lines). Connect the hose coupling and slide the ends of the safety cable back until the cable is straight and the hose is slightly bent.

Order code Description

12321 Safety Cables up to 1" I.D.

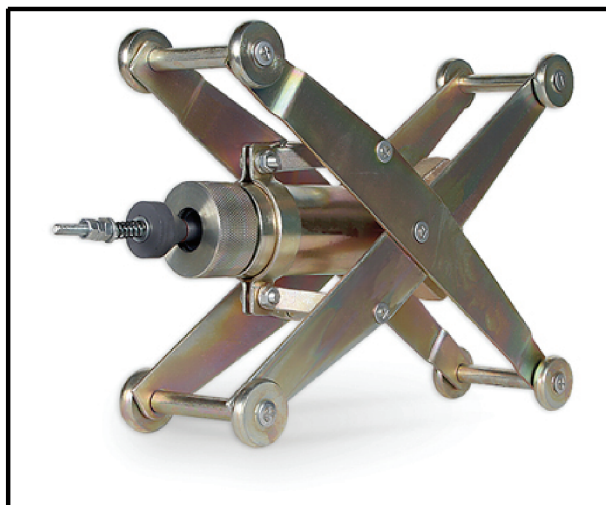
12322 Safety Cables 1.1/4" – 3" I.D.

Name	Art. Nummer	Preis	Ab 10 Stk.	Ab 100 Stk.
------	-------------	-------	------------	-------------



ROHRINNENSTRAHLGERÄTE

PBT-1



PBT-1 Internal Pipe Blasting Tool

- For pipes 3" (75MM) – 12" (300MM) ID
- Adjustable centering carriage for consistent blast pattern
- Use with standard blast machine

The PBT-1 pipe cleaning tool is an ideal companion to clean blast pipes from 3" (75mm) to 12" (300mm) inner diameter.

The PBT-1 consists of a boron carbide (B4C) nozzle in a short venturi form with a boron carbide circular deflection tip, which blasts abrasive media in a continuous circle pattern. The boron carbide materials ensure low wear and a long

service life.

Centering collars and carriage allow fitting the PBT-1 to any pipe with an inner diameter between 3" (75mm) and 12" (300mm).

When used without centering collars, the PBT-1 can clean pipes with an I.D. of 2 1/2" (63mm).

With the centering collars

PBT-1 can be used in the 3" to 5" I.D. pipe range.

With centering carriage PBT-1 is adjustable to handle all diameters between 5" and 12" I.D.

COMPLETE PACKAGE:
centering collars sets,
centering carriage, wrenches set.

Order code Model Description
12600 PBT-1

Pipe blasting tool 3" (75mm) –

12" (300mm) with 12,5 mm nozzle and boron carbide (B4C) deflection tip. Complete package incl. centering collars sets, centering carriage, wrenches set.

Name	Art. Nummer	Preis	Ab 10 Stk.	Ab 100 Stk.
------	-------------	-------	------------	-------------

PBT-2



PBT-2 Internal Pipe Blasting Tool

- For pipes 12" (300 mm) to 36" (900 mm) ID
- Air motor control offers flexibility in cleaning rates for varying surface conditions
- Adjustable centering carriage for consistent blast pattern
- Use with standard blast machine

The PBT-2 is an accessory for all Contracor blast machines that allows easy cleaning of the internal surface of steel pipes. It is durable, portable, and most of all, easy to use, allowing considerable increases in productivity.

The PBT-2 consists of an adjustable centre carriage on which a pneumatically driven motor is mounted, which rotates the blast head to produce a uniform

cleaned blast surface. The carriage is infinitely adjustable from 12" (300mm) to 36" (900mm) inside diameter. The motor is driven by compressed air. The rotational speed is infinitely variable, allowing high operational flexibility with all degrees of corrosion of the inner surfaces.

The PBT-2 unit can be operated with nozzle sizes from 5.0mm to 9.5mm inner diameter.

COMPLETE PACKAGE:
PBT-2, two leg sets (short leg set 12"-20" and long leg set 24"-36"), 2 x PBN-6.5 nozzles, wrenches set.

Order code Model Description
12700 PBT-2
Pipe blasting tool 12" (300mm) – 36" (900mm)
Complete package incl. two leg sets (short leg set 12"-20" and

long leg set 24"-36"), 2 x PBN-6.5 nozzles, wrenches set.
12701 PBN-5.0 Dia. 5.0 mm
B4C Blast nozzle for PBT-2
12702 PBN-6.5 Dia. 6.5 mm
B4C Blast nozzle for PBT-2
12703 PBN-8.0 Dia. 8.0 mm
B4C Blast nozzle for PBT-2
12704 PBN-9.5 Dia. 9.5mm
B4C Blast nozzle for PBT-2

Name	Art. Nummer	Preis	Ab 10 Stk.	Ab 100 Stk.
------	-------------	-------	------------	-------------



STRAHLZUBEHÖR (LAMPE)

Lampe

Blast Light ABL

- Rubber Light Body for durability and reduced weight
- Integrated hose clamp for fast mounting on the blast hose
- 20-watt Halogen Bulb provides bright light to the work surface
- Multiple power source capabilities to match your work environment



The 12V DC ABL Blast Light attaches to the blast hose providing illumination to the work surface when working in low-light areas.

A 20-watt halogen bulb can be powered by either a 12-volt DC battery or a 230V to 12V DC transformer, allowing for versatility in work environments. The longlasting bulb is protected by a thick replaceable lens and rubber Light Body for lasting

durability.

The compact ABL Light Body has integrated hose clamp allowing for direct attachment to the blast hose and a 5 meter rubberized power cord.

COMPLETE PACKAGE:

Blast Light with integrated hose clamp, 20W -12V DC halogen bulb, 5m. power cord.

Order code Model Description
12250 ABL Blast Light, 20W, 12V DC, incl. 5m. power cord

Name	Art. Nummer	Preis	Ab 10 Stk.	Ab 100 Stk.
------	-------------	-------	------------	-------------



STRAHLHELME

G1

COMFORT abrasive blasting helmet.

COMFORT disposable lenses. In Comfort blast helmet regular glass, protected with a stainless steel wire mesh screen, is used as disposable lens. Replacement is easy and cheap, as a simple glass plate can be cut to size and used as replacement.

1. Easy and sure locking window frame
2. Air flow indicator for safety
3. 6-point nylon suspension have quick and easy adjustments
4. Pressure regulator
5. Durable nylon cape
6. Handle for easy transportation
7. Exchangeable cotton neck seal

This very comfortable, lightweight and value-formoney



hood is suitable for any kind of abrasive blasting work. Its design ensures constant airflow to the visor in order to prevent misting. The Comfort hood is equipped with a pressure regulator, an airflow indicator and a cape.

Order code Model Description
30000 COMFORT Blast
Helmet, durable nylon cape

Name	Art. Nummer	Preis	Ab 10 Stk.	Ab 100 Stk.
------	-------------	-------	------------	-------------

G4

ASPECT abrasive blasting helmet

ASPECT disposable lenses

In Aspect blast helmet

disposable

clear acetate lenses protected by a stainless steel wire mesh screen are used.

Disposable lenses can be exchanged in a matter of seconds, and are available in practical packs with 50pcs.

1. High operator visibility and security are provided by two lenses and a wire mesh screen
 - Fixed inner lens
 - Disposable lens
 - Wire mesh screen.
2. The robust, durable shell of the Aspect blast helmet ensures operator security and a long service life of the helmet, whilst an air baffle delivers a constant flow of air to the operator's head and face to reduce fatigue, prevent misting and increase productivity and safety.
3. The top of the cape is protected from ricochet of blast material by an extended window frame
4. The embedding of media between the lenses is prevented by an integral 1"-deep visor.
5. Easy closing of the window through a slot which aligns the closing latch and tab.
6. The cape is fixed to the bottom rim of the helmet via an

adjustable ratchet buckle, which ensures a secure fit and easy replacement.

This very comfortable, lightweight and value-for-money helmet is suitable for any kind of abrasive blasting work.

The helmet is designed with a wide viewing window.

This is an important feature when the operator's movement is limited, e.g. in blasting rooms, while cleaning the internal surfaces of reservoirs, holds, etc.

Two lenses and wire mesh screen preserve the operator's clear view of the work surface and protects the operator from dust and abrasive in the ambient air:

A replaceable fixed inner lens securely fits inside a molded rubber gasket.

A displacement lens protects the inner lens from frosting and can be easily replaced.



A wire mesh screen protects from blast media ricochet. Its design ensures constant airflow to the visor in order to prevent misting. The Aspect helmet is equipped with a pressure regulator, an airflow indicator and a durable cape.

Order code Model Description
30600 ASPECT Blast Helmet, durable nylon cape
30602 Disposable lenses, pack 50 pcs.

Name	Art. Nummer	Preis	Ab 10 Stk.	Ab 100 Stk.
------	-------------	-------	------------	-------------

STRAHLANZÜGE

Heavy-Duty Blast Overall

- Durable leather panels protect arms and legs, while durable breathable cotton back improves operator comfort.
- Adjustable straps on cuffs help keep dust and abrasive at bay for any operator.
- Double stitching for long service life
- Gauntlet gloves protect hands and wrist

The Contracor heavy-duty blast overall with gauntletstyle leather gloves protect the operator from reboundingabrasive media.

The arms and legs are protected by durable leather panels, while heavy-duty breathable cotton fabric on the back permits an air-flow, increasing operator comfort. The Contracor heavy-duty blast overall is equipped with both zip and Velcro closures for double dust protection, elastic seals around the arms and fastenings on the pants to keep out dust and abrasive. Double stitching on the overall ensures long service life.



Order code Size Description

Heavy-Duty Blast Overall,
Leather / Cotton, incl. gloves
) Heavy-Duty Blast Overall,
Leather / Cotton, incl. gloves

Name	Art. Nummer	Preis	Ab 10 Stk.	Ab 100 Stk.
Heavy-Duty Blast Overall, Leather / Cotton, incl. gloves	30700 50 (S)			
Heavy-Duty Blast Overall, Leather / Cotton, incl. gloves	30701 52 (M)			

Heavy-Duty Blast Overall, Leather / Cotton, incl. gloves	30702 54 (L)
Heavy-Duty Blast Overall, Leather / Cotton, incl. gloves	30703 56 (XL)
Heavy-Duty Blast Overall, Leather / Cotton, incl. gloves	30704 58 (XXL)
Heavy-Duty Blast Overall, Leather / Cotton, incl. gloves	30705 60 (XXXL)
Long sleeves leather gloves	30710

Seasonal Blast Overall

- Weighs and costs less than Contracor heavy-duty blast overall.
- Nylon and cotton construction is easily machine washable.
- Comfortable to use in the summer time or in the countries with hot climate

The Contracor light-duty blast overall protects the operator from rebounding abrasive media.

It is an inexpensive substitute for a heavy-duty overall, especially for short-term work or non-blast personnel working intermittently at a blast site. Through its lighter weight, the light-duty overall is more comfortable to wear in hot climates and in summer. The nylon and cotton fabrics are easily machine washable. After a job involving toxic elements, discarding a light-duty overall is more economically sensible than throwing a heavy-duty overall away.



Order code Size Description

Name	Art. Nummer	Preis	Ab 10 Stk.	Ab 100 Stk.
Name				
Light-Duty Blast Overall, Nylon / Cotton	30730 50 (S)			
Light-Duty Blast Overall, Nylon / Cotton	30731 52 (M)			
Light-Duty Blast Overall, Nylon / Cotton	30732 54 (L)			
Light-Duty Blast Overall, Nylon / Cotton	30733 56 (XL)			
Light-Duty Blast Overall, Nylon / Cotton	30734 58 (XXL)			
Light-Duty Blast Overall, Nylon / Cotton	30735 60 (XXXL)			
Long sleeves leather gloves	30710			



MEASURING EQUIPMENT

GRIT

Surface Roughness
Comparator GRIT

A precision nickel comparator plate which conforms to International Standard ISO 8503 for grit and shot blast surface roughness comparison measurement.

Comparators allow the estimation of surface roughness by touch and sight. They are split into four sections, each with a different and defined roughness.

The grit version is split into sections equivalent to 25, 60, 100 and 150 microns.

Order code Model Description
70510 SRC-GRIT Surface
Roughness Comparator, Grit



Name	Art. Nummer	Preis	Ab 10 Stk.	Ab 100 Stk.
------	-------------	-------	------------	-------------

SHOT

Surface Roughness
Comparator SHOT

A precision nickel comparator plate which conforms to International Standard ISO 8503 for grit and shot blast surface roughness comparison measurement.

Comparators allow the estimation of surface roughness by touch and sight. They are split into four sections, each with a different and defined roughness.

The shot version is split into sections equivalent to 25, 40, 70 and 100 microns.



Order code Model Description
70500 SRC-SHOT Surface
Roughness Comparator, Shot

Name	Art. Nummer	Preis	Ab 10 Stk.	Ab 100 Stk.
------	-------------	-------	------------	-------------

